



TRADITIONAL

Traditional Colors are warm, earth tone, and neutral colors designed to enhance the aesthetics of a public space long-term. These colors are commonly used in community areas, universities, public buildings, crosswalks, and plazas, and in decorative streetscape designs. The Traditional Colors family provides more subtle and flexible colors that go well together in any pavement coatings project.



SOLAR-REFLECTIVE

Solar-Reflective Colors use special technology designed to cool high-traffic areas without limiting color choices to white or light colors. Solar-Reflective Colors reduce Urban Heat Island Effect and the temperature of asphalt surfaces while resisting UV damage and degradation of asphalt to create a more comfortable environment. These colors are typically used in pedestrian and vehicular high-traffic areas such as parks, schools, playgrounds, and non-covered areas that experience direct sunlight.



CYCLE LANE

These bold, highly reflective colors are designed to delineate public cycle lanes and intersections, helping to keep cyclists safe and reinforce priority to bicyclists by visually alerting drivers to the presence of a cycle lane. Cycle Lane Colors are also used in the coating of off-street jogging/cycle paths, bus lanes, school zones, and parking lot markings.



SIGNATURE

Signature Colors transform the look and feel of a community by providing a custom palette that is designed for achieving a differentiated look. These are non-stocked custom colors used in public areas such as decorative streetscapes, parks, plazas, sports courts, civic centers, and playgrounds to direct pedestrian and vehicular traffic flow.



PAVEMENT

COATINGS

COLOR

GUIDE





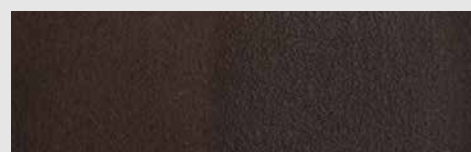
TRADITIONAL



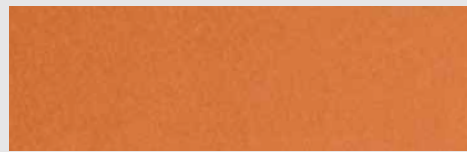
San Diego Buff



Taupe



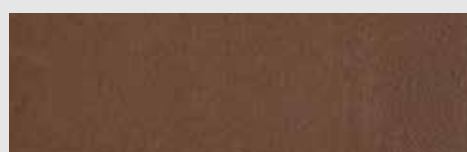
Burnt Sienna



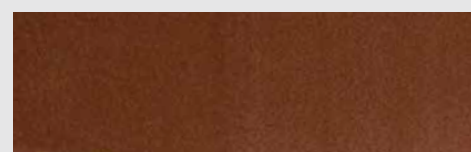
Nutmeg



Terra Cotta



Bedrock



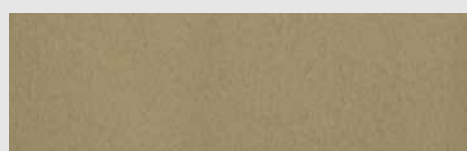
Brick



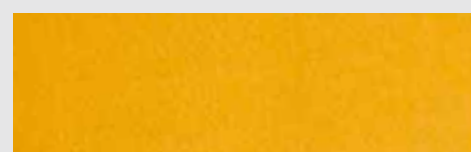
Brown Suede



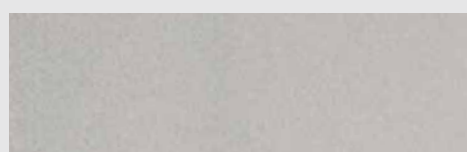
Sunset Blush



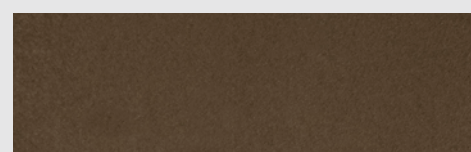
Concrete Gray



Marigold



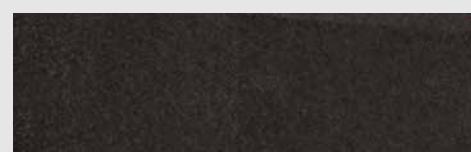
Pewter



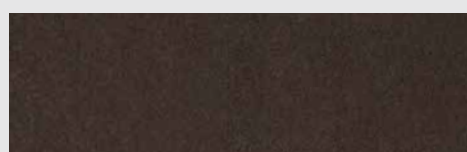
Sierra



Hunter Green



Black



Slate



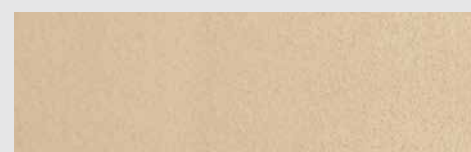
Granite



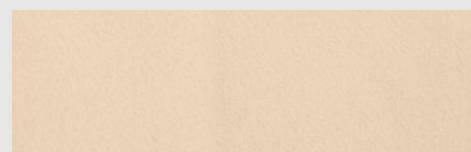
SOLAR-REFLECTIVE



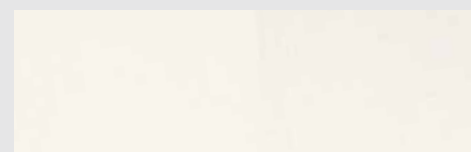
SR Sandstone (SRI = 36)
Reflectance: .32
Emittance: .94



SR Khaki (SRI = 37)
Reflectance: .33
Emittance: .94



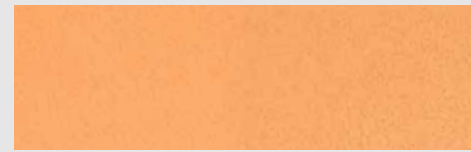
SR Irish Cream (SRI = 50)
Reflectance: .43
Emittance: .94



SR White (SRI = 73)
Reflectance: .60
Emittance: .94



SR Fawn (SRI = 35)
Reflectance: .31
Emittance: .93



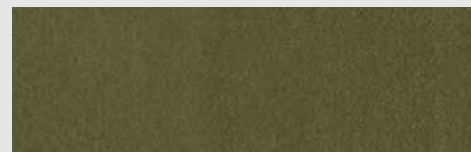
SR Sun Baked Clay (SRI = 52)
Reflectance: .44
Emittance: .95



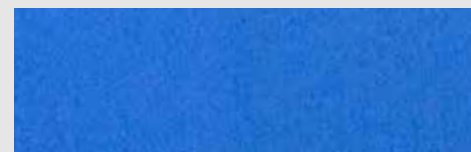
SR Brownstone (SRI = 31)
Reflectance: .30
Emittance: .90



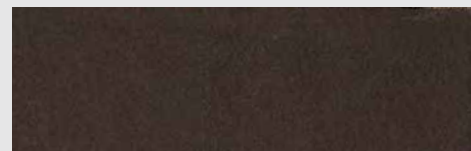
SR Terra Cotta (SRI = 33)
Reflectance: .31
Emittance: .92



SR Evergreen (SRI = 33)
Reflectance: .32
Emittance: .88



SR Safety Blue (SRI = 33)
Reflectance: .30
Emittance: .93



SR Slate (SRI = 34)
Reflectance: .31
Emittance: .91

DecoCoat Colorants can contribute to LEED points.

Note: Reflectance values are measured in accordance with American Standard of Testing Methodology (ASTM) C1549. Emittance values are measured in accordance with ASTM C1371. The SRI values of DecoCoat are calculated according to ASTM E1980-01.



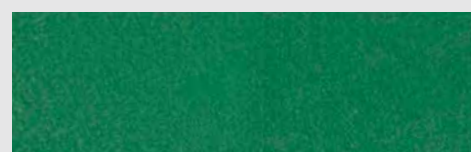
CYCLE LANES



CL Shamrock Green



CL Celtic Green



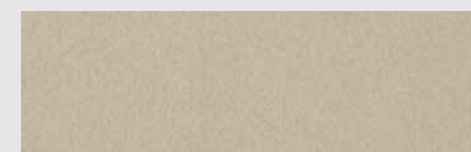
CL Emerald Green



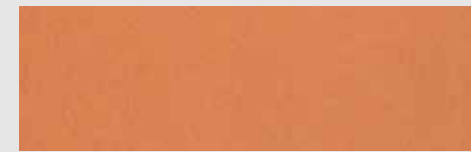
SIGNATURE



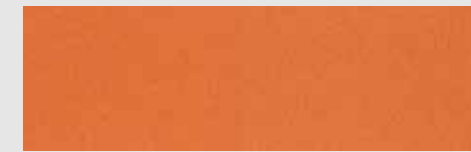
Sandy Beige



Driftwood



Butterscotch



Pumpkin Spice



Chestnut Brown



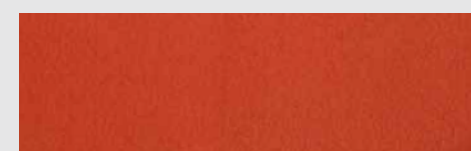
Mocha



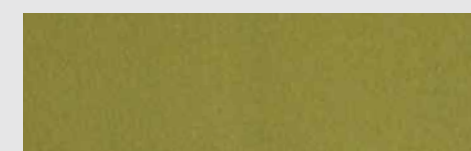
Mustard



Down To Earth



Paprika



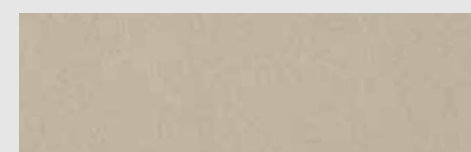
Avocado



Sea Foam



Aqua



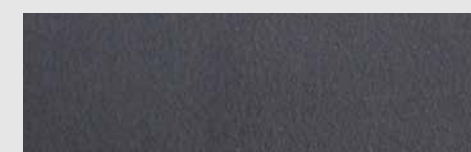
Sage



Truffle



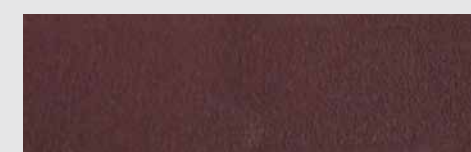
Patriot Blue



Cobalt Blue



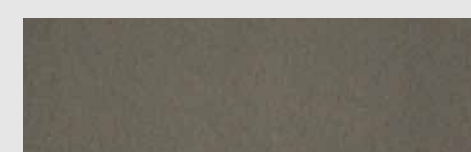
Gun Metal



Merlot



Smokey Mauve



Graphite



Bike Path Green